

# PRODUCT INFORMATION

ABSTRAL<sup>®</sup>

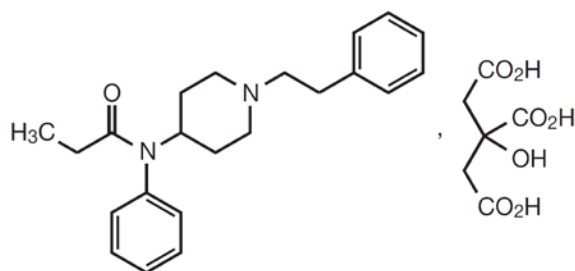
## NAME OF THE MEDICINE

Fentanyl citrate

## Chemical Structure

Fentanyl citrate is known chemically as *N*-phenyl-*N*-[1-(2-phenylethyl)piperidin-4-yl]propanamide dihydrogen 2-hydroxypropane-1,2,3-tricarboxylate. The molecular formula is C<sub>22</sub>H<sub>28</sub>N<sub>2</sub>O•C<sub>6</sub>H<sub>8</sub>O<sub>7</sub> and the molecular weight is 528.6 (free base 336.5).

## Structural formula



## CAS Number

990-73-8

## DESCRIPTION

Fentanyl citrate is a highly lipophilic white or almost white powder that is freely soluble in organic solvents ( $\log P_{\text{octanol/water}} = 2.98$ ) and soluble in water (1:40). The dissolution rate of fentanyl citrate is promoted by the use of a micronised grade.

ABSTRAL sublingual tablets contain the following excipients: mannitol, microcrystalline cellulose, colloidal anhydrous silica, croscarmellose sodium and magnesium stearate.

## PHARMACOLOGY

Fentanyl citrate belongs to the pharmacotherapeutic group: Phenylpiperidine derivatives (ATC code: N02AB03)

### Pharmacodynamics

Fentanyl is a potent  $\mu$ -opioid analgesic with rapid onset of analgesia and short duration of action. Fentanyl is approximately 100-fold more potent than morphine as an analgesic. Secondary effects of fentanyl on central nervous system (CNS), respiratory and gastrointestinal function are typical of opioid analgesics and are considered to be class effects. These can include respiratory depression, bradycardia, hypothermia, constipation, miosis, physical dependence and euphoria.

The analgesic effects of fentanyl are related to the blood level of the active substance; in opioid-naïve patients, minimum effective analgesic serum concentrations of fentanyl range from 0.3-1.2 ng/mL, while blood levels of 10-20 ng/mL produce surgical anaesthesia and profound respiratory depression.

Fentanyl, in common with all  $\mu$ -opioid receptor agonists, produces dose dependent respiratory depression. This risk is higher in opioid-naïve subjects than in patients experiencing severe pain or receiving chronic opioid therapy. Long-term treatment with opioids typically leads to development of tolerance to their secondary effects.

While opioids generally increase the tone of urinary tract smooth muscle, the net effect tends to be variable, in some cases producing urinary urgency, in others, difficulty in urination.

Opioids increase the tone and decrease the propulsive contractions of the smooth muscle of the gastrointestinal tract leading to a prolongation in gastrointestinal transit time, which may be responsible for the constipating effect of fentanyl.

## **Pharmacokinetics**

### Absorption

Fentanyl is a highly lipophilic drug absorbed very rapidly through the oral mucosa and more slowly through the gastrointestinal tract. Orally administered fentanyl undergoes pronounced hepatic and intestinal first pass effects.

ABSTRAL is a quick dissolving sublingual tablet formulation. Rapid absorption of fentanyl occurs over about 30 minutes following administration of ABSTRAL. The absolute bioavailability of ABSTRAL has been calculated to be 54%. Mean maximal plasma concentrations of fentanyl range from 0.2 to 1.5 ng/mL (after administration of 100 to 800 µg ABSTRAL) and are reached within 22.5 to 240 minutes.

### Distribution

About 80-85% of fentanyl is bound by plasma proteins, mainly  $\alpha$ 1-glycoprotein and to a lesser extent albumin and lipoprotein. The volume of distribution of fentanyl at steady state is about 3-6 l/kg.

### Metabolism

Fentanyl is metabolised primarily via CYP3A4 to a number of pharmacologically inactive metabolites, including norfentanyl.

### Excretion

Within 72 hours of intravenous fentanyl administration around 75% of the dose is excreted into the urine, mostly as metabolites, with less than 10% as unchanged drug. About 9% of the dose is recovered in the faeces, primarily as metabolites. Total plasma clearance of fentanyl is about 0.5 l/h/kg. After ABSTRAL administration, the mean elimination half-life of fentanyl is about 7 hours (range 3-12.5 hours) and the terminal half-life is about 20 hours (range 11.5-25 hours).

The pharmacokinetics of ABSTRAL have been shown to be dose proportional over the dose range of 100 to 800 µg. Pharmacokinetic studies have shown that multiple tablets are bioequivalent to single tablets of the equivalent dose.

### Renal/hepatic impairment:

Impaired hepatic or renal function could cause increased serum concentrations. Elderly, cachectic or generally impaired patients may have a lower fentanyl clearance, which could cause a longer terminal half-life for the compound (see also PRECAUTIONS and DOSAGE AND ADMINISTRATION).

## **CLINICAL TRIALS**

Fentanyl citrate has been used extensively for pain relief, including cancer patients, and a significant body of research has been published in the scientific literature.

The efficacy of ABSTRAL was investigated in Study EN3267-005, a randomised, double-blind, placebo-controlled, multicenter phase III study in 131 opioid-tolerant cancer patients with breakthrough pain. All patients (N = 131) were receiving a stable, fixed-schedule oral opioid regimen equivalent to 60 to 1000 mg of oral morphine per day or transdermal fentanyl therapy equivalent to 50 to 300 µg/h; were on a stable dose of opioid medication for relief of breakthrough pain; and were experiencing at least one but not more than 4 episodes of breakthrough pain per day. Pre-emptive use of ABSTRAL for predictable pain episodes was not investigated in the clinical trials.

Patients were titrated to a single effective dose of ABSTRAL for adequate treatment of their breakthrough pain in an initial open-label phase. Patients who were successfully titrated were then included in a double-blind, randomised, placebo-controlled phase of up to 2 weeks, during which 10 episodes of breakthrough pain were treated with ABSTRAL (7

doses) or placebo (3 doses). Patients who completed the double-blind phase elected to continue in an open-label extension phase using ABSTRAL to treat breakthrough pain episodes for up to 12-months.

Open-label titration identified a successful dose of ABSTRAL, within the range of 100 to 800 µg. A “successful” dose was defined as the one, single dosage strength of ABSTRAL that successfully treated all breakthrough pain episodes that occurred for 2 consecutive days with tolerable side effects. Of the 131 patients enrolled, 53 (40.5%) discontinued during the titration period.

The final titrated dose of ABSTRAL for breakthrough cancer pain was not predictable from the background opioid dose underlying the need for individual titration starting at 100 µg.

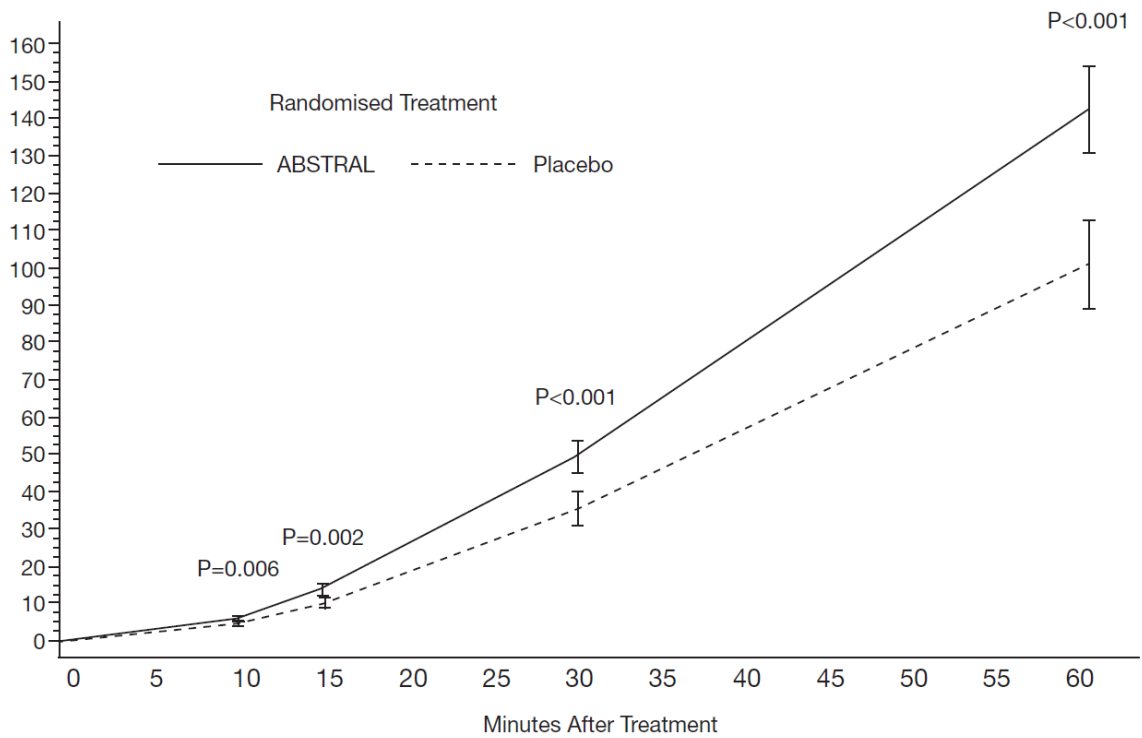
The interim analysis of efficacy became the primary analysis because it led to the double-blind treatment phase of the study being terminated in accordance with the predefined stopping rules, after which patients proceeded directly from the titration period to the open-label long-term extension.

The mean age of subjects in the ITT population (n=131) was 55.0 years (range 21-80 years) with 54.2% female and 45.8% male.

The primary efficacy endpoint was the sum of pain intensity difference (SPID) from Baseline to 30 minutes after treating breakthrough pain episodes with study medication. The secondary objectives were to compare the efficacy of ABSTRAL with that of placebo in treating BTcP episodes in opioid-tolerant cancer patients for 1) Pain Intensity Difference (PID) and Pain Relief (PR) at time points 10, 15, 30 and 60 min; patient global evaluation of study medication, and the use of rescue medication; and 2) to evaluate the safety and tolerability of ABSTRAL in treating BTcP episodes in opioid-tolerant cancer patients, as measured by the occurrence of adverse events (AEs) and withdrawals because of AEs.

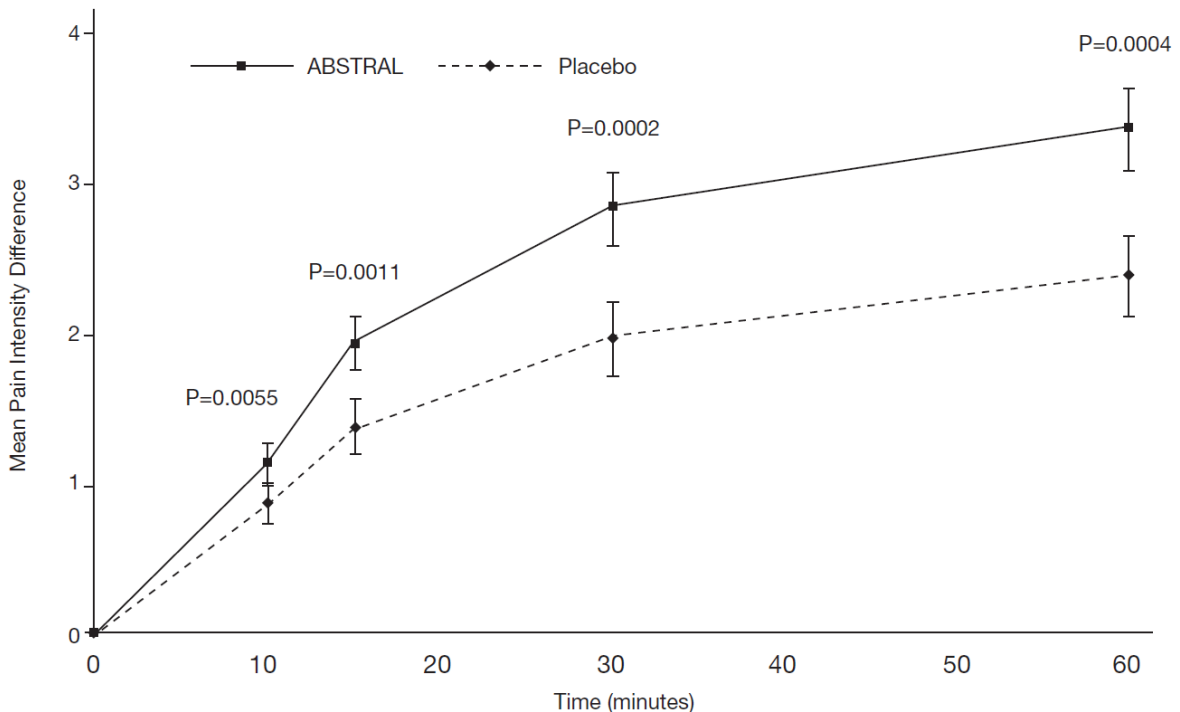
ABSTRAL was found to be superior to placebo in treating cancer breakthrough pain as measured by SPID over the first 30 minutes of a breakthrough episode (49.3, 35.23 respectively,  $p=0.0004$ ). The difference of least squares mean between the treatments was 14.08 (95% CI: 6.515, 21.637).

The difference in SPID reached statistical significance ( $p = 0.006$ ) as early as 10 minutes post dose and the difference continued to be statistically significant through all time points thereafter until the final assessment at 60 minutes post-dose (Figure 1).



**Figure 1: Mean Sum Pain Intensity Difference (SPID) for ABSTRAL Compared with Placebo**

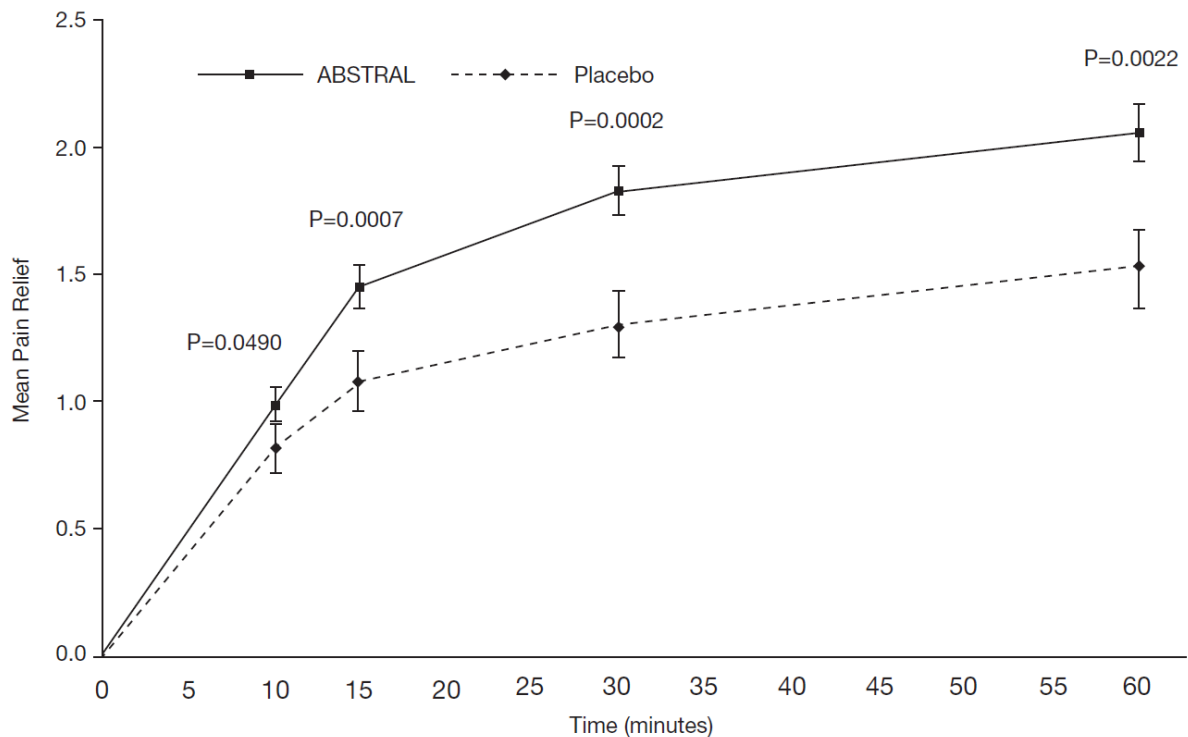
ABSTRAL was also shown to provide improved reduction in pain intensity (PID), a pre-specified secondary endpoint, from the first measured time point (10 minutes) that was significantly different to placebo (1.16 vs. 0.88 respectively;  $p=0.0055$ ). The statistically significant difference was maintained to at least 60 minutes. (Figure 2)



**Figure 2 Mean Pain Intensity Difference from baseline ( $\pm$  SE) for ABSTRAL Compared with Placebo (measured by a 0-10 Lickert scale)**

Similarly, ABSTRAL provided statistically significantly greater pain relief, compared with placebo, from 10 min post-dose (pre-specified secondary endpoint) and throughout the assessment period ( $p=0.049$ ; Figure 3). Clinically significant differences between ABSTRAL

and placebo were apparent approximately 30 minutes after dosing and were maintained for approximately 60 minutes after dosing.



**Figure 3** Mean pain relief over time for breakthrough cancer pain episodes treated with ABSTRAL and placebo (interim ITT, n=61). Error bars represent standard error. The efficacy of ABSTRAL compared with placebo was examined across gender, age, and dose subgroups, as well as by the type of opioid medication patients used for their fixed-schedule analgesic treatment for chronic pain. (Table 1)

**Table 1 Mean Sum of Pain Intensity Difference (SPID) At 30 and 60 Minutes after Treatment by Gender, Age, Dose, And Type of Opioid Medication (Study EN3267-005, ITT Population)**

Demographics and Baseline Characteristics	SPID 30				SPID 60			
	N	ABSTRAL Mean (SD)	N	Placebo Mean (SD)	N	ABSTRAL Mean (SD)	N	Placebo Mean (SD)
<b>Gender</b>								
Male	30	48.06 (32.23)	27	36.65 (37.50)	30	131.68 (75.61)	27	99.47 (86.58)
Female	31	50.85 (33.68)	30	36.62 (42.23)	31	153.88 (90.68)	30	109.03 (118.21)
<b>Age group</b>								
18-64	52	51.25 (32.84)	49	36.55 (39.67)	52	145.66 (83.30)	49	100.64 (100.35)
65-74	8	37.32 (33.60)	7	35.19 (45.68)	8	121.25 (93.22)	7	124.95 (136.77)
>74	1	54.49	1	51.00	1	176.07	1	150.67
<b>Dose group</b>								
Low (100-400 µg)	33	53.07 (21.91)	31	40.60 (41.96)	33	152.16 (80.16)	31	114.03 (111.68)
High (600-800 µg)	28	45.24 (35.86)	26	31.91 (37.09)	28	132.12 (87.82)	26	93.14 (94.03)
<b>Type of opioid medication</b>								
Oral	60	48.60 (32.29)	56	35.06 (38.22)	60	140.54 (82.18)	56	99.77 (98.17)
Transdermal	20	40.07 (20.52)	20	27.18 (31.39)	20	127.53 (55.02)	20	85.15 (86.78)
Other	1	34.86	1	22.17	1	105.43	1	66.67

NOTE: SPID is calculated as the area under a patient's PID curve from each BTcP episode treated with study medication and then averaged across episodes by treatment group.

Abbreviation: BTcP = breakthrough cancer pain; SD = standard deviation; SPID = sum of pain intensity difference.

Results of the subgroup analyses of the SPID for the ITT population consistently favoured the ABSTRAL treatment group compared with the placebo treatment group regardless of gender or age. Higher mean SPIDs were found at 30 and 60 minutes after treatment with low (100 to 400 µg) or high (600 to 800 µg) doses, indicating that once titration to an appropriate dose was achieved, the response to ABSTRAL was similar across dose groups. In addition, higher mean SPIDs were recorded at both 30 and 60 minutes after treatment with ABSTRAL regardless of the type of baseline opioid medication used to treat chronic cancer pain.

## INDICATIONS

ABSTRAL is indicated for the management of breakthrough pain in adults with cancer who are already receiving maintenance opioid therapy for chronic pain. Breakthrough pain is a transient exacerbation of otherwise controlled chronic background pain.

## CONTRAINDICATIONS

- Hypersensitivity to the active substance or to any of the excipients.
- Non-opioid tolerant patients because of the risk of life-threatening respiratory depression.
- Severe respiratory depression or severe obstructive lung conditions.
- Use in patients not receiving opioid maintenance therapy for cancer related pain.

## **PRECAUTIONS**

### **Instructions to patients**

Patients and their carers must be instructed that ABSTRAL contains an active substance in an amount that can be fatal to a child, and therefore to keep all tablets out of the reach and sight of children.

Due to the potentially serious undesirable effects that can occur when taking an opioid therapy such as ABSTRAL, patients and their carers should be made fully aware of the importance of taking ABSTRAL correctly and what action to take should symptoms of overdose occur.

### **Opioid-naïve patients**

ABSTRAL is contraindicated in non-opioid tolerant patients because of the risk of life-threatening respiratory depression (see **CONTRAINDICATIONS**).

### **Stabilisation of chronic opioid therapy**

Before ABSTRAL therapy is initiated, it is important that the patient's long-acting opioid treatment used to control their persistent pain has been stabilised.

### **Tolerance, dependence and withdrawal**

ABSTRAL is contraindicated for treatment of non-cancer-related pain.

Use in patients with cancer, who are not receiving opioids as maintenance therapy for background, cancer-related pain carries a risk of dependence (in addition to the risk of life threatening respiratory depression). Careful record keeping of prescribing information, including quantity, frequency, and renewal requests is strongly advised.

Upon repeated administration of opioids, including fentanyl, tolerance and physical and/or psychological dependence may develop. Iatrogenic addiction following therapeutic use of opioids is rare.

There should be no noticeable effects on cessation of treatment with ABSTRAL, but possible symptoms of withdrawal are anxiety, tremor, sweating, paleness, nausea and vomiting.

### **Special risk patients**

#### Respiratory

In common with all opioids, there is a risk of clinically significant respiratory depression associated with the use of ABSTRAL. Particular caution should be exercised during dose titration with ABSTRAL in patients with chronic obstructive pulmonary disease or other medical conditions predisposing them to respiratory depression (e.g. myasthenia gravis) because of the risk of further respiratory depression, which could lead to respiratory failure.

#### Head injuries and raised intracranial pressure

ABSTRAL should only be administered with extreme caution in patients who may be particularly susceptible to the intracranial effects of hypercapnia, such as those showing evidence of raised intracranial pressure, reduced consciousness, coma or brain tumours. In patients with head injuries, the clinical course may be masked by the use of opioids. In such a case, opioids should be used only if absolutely necessary.

#### Cardiovascular

Intravenous fentanyl has been shown to cause bradycardia. ABSTRAL should be used with caution in patients with previous or pre-existing bradyarrhythmias.

#### Hypovolaemia and hypotension

Care should be taken in treating patients with hypovolaemia and hypotension.

#### Serotonin Syndrome

Caution is advised when ABSTRAL is coadministered with drugs that affect the serotonergic neurotransmitter systems.

The development of a potentially life-threatening serotonin syndrome may occur with the concomitant use of serotonergic drugs such as Selective Serotonin Re-uptake Inhibitors (SSRIs) and Serotonin Noradrenalin Re-uptake Inhibitors (SNRIs), and with drugs which impair metabolism of serotonin (including Monoamine Oxidase Inhibitors [MAOIs]). This may occur within the recommended dose range.

Serotonin syndrome may include mental-status changes (e.g., agitation, hallucinations, coma), autonomic instability (e.g. tachycardia, labile blood pressure, hyperthermia), neuromuscular abnormalities (e.g. hyperreflexia, incoordination, rigidity), and/or gastrointestinal symptoms (e.g. nausea, vomiting, diarrhoea).

If serotonin syndrome is suspected, treatment with ABSTRAL should be discontinued.

### **Use in the elderly**

Data from intravenous studies with fentanyl suggest that elderly patients may have reduced clearance, a prolonged half-life and they may be more sensitive to the active substance than younger patients. Elderly, cachectic, or debilitated patients should be observed carefully for signs of fentanyl toxicity and the dose reduced if necessary.

### **Hepatic and renal impairment**

ABSTRAL should be administered with caution to patients with liver or kidney dysfunction, especially during the titration phase. The use of ABSTRAL in patients with hepatic or renal impairment may increase the bioavailability of fentanyl and decrease its systemic clearance, which could lead to accumulation and increased and prolonged opioid effects.

### **Mucositis**

ABSTRAL has not been studied in patients with mouth wounds or mucositis. There may be a risk of increased systemic drug exposure in such patients and therefore extra caution is recommended during dose titration.

### **Effects on Fertility**

In humans, the prolonged use of opioid analgesics may result in sexual dysfunction, infertility or impairment of fertility in both sexes, and menstrual disturbance in women. Impairment of fertility has been observed in female rats given 160 µg/kg/day subcutaneous fentanyl (no-effect dose not established) or 400 µg/kg/day intravenous fentanyl (no-effect dose 100 µg/kg/day). No effect was observed on the fertility of male rats given 400 µg/kg/day intravenous fentanyl.

### **Use in Pregnancy (Category C)**

Fentanyl crosses the placenta in humans (foetal blood concentrations about 40% of maternal blood concentrations). There are no adequate and well-controlled studies in pregnant women. ABSTRAL should be used during pregnancy only if the potential benefit justifies the potential risk to the foetus. No epidemiological studies of congenital abnormalities in infants born to women treated with fentanyl during pregnancy have been reported. Chronic maternal treatment with fentanyl during pregnancy has been associated with transient respiratory depression, behavioural changes, or seizures in newborn infants characteristic of neonatal abstinence syndrome.

In pregnant rats, fentanyl is embryocidal as evidenced by increased resorptions at doses of 30 µg/kg/day intravenously or 160 µg/kg/day or greater subcutaneously. Intravenous administration to rats at 30 µg/kg/day during organogenesis was associated with prolonged delivery time and increased postnatal mortality of offsprings. There was no effect on embryofoetal development when rats received fentanyl at subcutaneous doses up to 500 µg/kg/day throughout gestation, and no evidence of teratogenicity in rabbits administered fentanyl at intravenous doses up to 400 µg/kg/day during organogenesis. The significance of these findings for potential human risk is unknown.



### **Use in lactation**

Fentanyl passes into breast milk and may cause sedation and respiratory depression in the breast-fed child. Fentanyl should not be used by breastfeeding women and breastfeeding should not be restarted until at least 5 days after the last administration of fentanyl.

### **Use in children and adolescents**

ABSTRAL is not recommended for use in children and adolescents below 18 years since the appropriate posology and safety of ABSTRAL have not been established in this population. The opioid maintenance dose, which constitutes adequate opioid tolerance for the use of ABSTRAL, has not been investigated in children, nor has the adequate dosage been identified.

### **Genotoxicity**

Fentanyl showed no evidence of genotoxic potential in assays for gene mutations (Ames reverse mutation test, mouse lymphoma thymidine kinase assay), chromosomal damage (Chinese hamster ovary cells, mouse micronucleus test) and other genotoxic effects (unscheduled DNA synthesis in rat hepatocytes, mammalian cell transformation assay). The metabolite despropionylfentanyl was negative in assays for reverse mutation in bacteria and chromosomal damage in human lymphocytes. The genotoxic potential of fentanyl is considered to be low.

### **Carcinogenicity**

Carcinogenicity studies (26-week dermal alternative bioassay in Tg.AC transgenic mice; two-year subcutaneous carcinogenicity study in rats) with fentanyl did not reveal any findings indicative of oncogenic potential. Evaluation of brain slides from the carcinogenicity study in rats revealed brain lesions in animals administered high doses of fentanyl citrate. The relevance of these findings to humans is unknown.

### **Effects on ability to drive and use machines**

No studies on the effects on the ability to drive and use machines have been performed. However, fentanyl may impair the mental or physical ability to perform potentially hazardous tasks such as driving or operating machinery. Patients should be advised not to drive or operate machinery if they become dizzy or drowsy or experience blurred or double vision while taking ABSTRAL.

## **INTERACTIONS WITH OTHER MEDICINES**

Fentanyl is metabolised by CYP3A4. Active substances that inhibit CYP3A4 activity such as macrolide antibiotics (e.g. erythromycin), azole antifungal agents (e.g. ketoconazole, itraconazole) or certain protease inhibitors (e.g. ritonavir) may increase the bioavailability of fentanyl by decreasing its systemic clearance, potentially enhancing or prolonging opioid effects. Grapefruit juice is also known to inhibit CYP3A4. Fentanyl should therefore be given with caution to patients if administered concomitantly with CYP3A4 inhibitors.

Use with potent cytochrome P450 3A4 inducers may decrease the effect of fentanyl.

Concomitant use of other CNS depressants, such as other morphine derivatives (analgesics and antitussives), general anaesthetics, skeletal muscle relaxants, sedative antidepressants, sedative H1 antihistamines, barbiturates, anxiolytics (i.e. benzodiazepines), hypnotics, antipsychotics, clonidine and related substances may produce increased CNS depressant effects. Respiratory depression, hypotension and profound sedation may occur.

Alcohol potentiates the sedative effects of morphine-based analgesics, therefore concomitant administration of alcoholic beverages or medicinal products containing alcohol with ABSTRAL is not recommended.

ABSTRAL is not recommended for use in patients who have received monoamine oxidase (MAO) inhibitors within 14 days because severe and unpredictable potentiation by MAO inhibitors has been reported with opioid analgesics.

The concomitant use of partial opioid agonists/antagonists (e.g. buprenorphine, nalbuphine, pentazocine) is not recommended. They have high affinity to opioid receptors with relatively low intrinsic activity and therefore partially antagonise the analgesic effect of fentanyl and may induce withdrawal symptoms in opioid dependent patients.

### Serotonergic Drugs

Co administration of fentanyl with a serotonergic agent, such as a Selective Serotonin Re-uptake Inhibitor (SSRI) or a Serotonin Noradrenalin Re-uptake Inhibitor (SNRI) or a Monoamine Oxidase Inhibitor (MAOI), may increase the risk of serotonin syndrome, a potentially life-threatening condition.

### **ADVERSE EFFECTS**

The safety assessment showed that the majority of patients in Phase III studies (73.3%) experienced at least one Treatment Emergent Adverse Event (TEAE), which is to be expected considering the patient population and a long term period of observation of up to 12 months. There was no evidence of any TEAEs becoming more prevalent or severe over time. 31.3% of patients experience TEAEs that were considered product-related by the investigator. The most common of these were nausea, somnolence and vomiting, all of which are known undesirable effects of opioids, and in keeping with the findings of previous clinical studies with ABSTRAL. Serious TEAEs were experienced by 18.3% of patients; only one of these (affect lability) was considered related to study medication.

Undesirable effects typical of opioids are to be expected with ABSTRAL; they tend to decrease in intensity with continued use. The most serious potential adverse reactions associated with opioid use are respiratory depression (which could lead to respiratory arrest), hypotension and shock.

The clinical trials of ABSTRAL were designed to evaluate safety and efficacy in treating patients with breakthrough cancer pain; all patients were taking concomitant opioids, such as sustained-release morphine, sustained-release oxycodone or transdermal fentanyl, for their persistent pain. Therefore it is not possible to definitively separate the effects of ABSTRAL alone.

The most frequently observed adverse reactions with ABSTRAL include typical opioid adverse reactions, such as nausea, constipation, somnolence and headache.

**Table 2: Tabulated Summary of Adverse Reactions with ABSTRAL and/or other fentanyl-containing compounds**

The following adverse reactions have been reported with ABSTRAL and/or other fentanyl-containing compounds during clinical studies and from post-marketing experience. They are listed below by system organ class and frequency (very common  $\geq 1/10$ ; common  $\geq 1/100$  to  $<1/10$ ; uncommon  $\geq 1/1,000$  to  $<1/100$ ; not known (cannot be estimated from available data)). Within each frequency grouping, undesirable effects are presented in order of decreasing seriousness.

System Organ Class	Adverse Reaction by Frequency			
	Very common $\geq 1/10$	Common $\geq 1/100$ to $<1/10$	Uncommon $\geq 1/1000$ to $<1/100$	Not known (cannot be estimated from available data)
Immune system disorders			Hypersensitivity	
Metabolism and nutrition disorders			Anorexia Decreased appetite	
Psychiatric disorders			Depression Paranoia Confusional state Disorientation Mental status changes	Hallucination

System Organ Class	Adverse Reaction by Frequency			
	Very common ≥ 1/10	Common ≥ 1/100 to <1/10	Uncommon ≥ 1/1000 to <1/100	Not known (cannot be estimated from available data)
			Anxiety Euphoric mood Dysphoria Emotional lability Disturbance in attention Insomnia	
<b>Nervous system disorders</b>		Dizziness Headache Somnolence	Amnesia Parosmia Dysgeusia Tremor Lethargy Hypoesthesia  Sleep disorder	Convulsion
<b>Eye disorders</b>			Vision blurred	
<b>Cardiac disorders</b>			Tachycardia Bradycardia	
<b>Vascular disorders</b>			Hypotension	
<b>Respiratory, thoracic and mediastinal disorders</b>		Dyspnoea	Oropharyngeal pain Throat tightness	Respiratory depression
<b>Gastrointestinal disorders</b>	Nausea	Stomatitis Vomiting Constipation Dry mouth	Mouth ulceration Gingival ulceration Lip ulceration Impaired gastric emptying Abdominal pain Dyspepsia Stomach discomfort Tongue disorder Aphthous stomatitis	Swollen tongue Diarrhoea

System Organ Class	Adverse Reaction by Frequency			
	Very common ≥ 1/10	Common ≥ 1/100 to <1/10	Uncommon ≥ 1/1000 to <1/100	Not known (cannot be estimated from available data)
<b>Skin and subcutaneous tissue disorders</b>		Hyperhidrosis	Skin lesion Rash Pruritus allergic Pruritus Night sweats Increased tendency to bruise	
<b>Musculoskeletal and connective tissue disorders</b>			Arthralgia Musculoskeletal stiffness Joint stiffness	
<b>Reproductive system and breast disorders</b>			Erectile dysfunction	
<b>General disorders and administration site conditions</b>		Fatigue	*Drug withdrawal syndrome Asthenia Malaise	Flushing and hot flush Peripheral oedema Pyrexia
<b>Injury, poisoning and procedural complications</b>			Accidental overdose	Fall

\* Opiate withdrawal symptoms such as nausea, vomiting, diarrhoea, anxiety, chills, tremor, and sweating have been observed with transmucosal fentanyl

## DOSAGE AND ADMINISTRATION

ABSTRAL should only be administered to patients who are considered tolerant to their opioid therapy for persistent cancer pain. Patients can be considered opioid tolerant if they take at least 60 mg of oral morphine daily or an equianalgesic dose of another opioid for a week or longer.

ABSTRAL sublingual tablets should be administered directly under the tongue at the deepest part. ABSTRAL sublingual tablets should not be swallowed, but allowed to completely dissolve in the sublingual cavity without chewing or sucking. Patients should be advised not to eat or drink anything until the sublingual tablet is completely dissolved.

In patients who have a dry mouth water may be used to moisten the buccal mucosa **before** taking ABSTRAL.

## Dose Initiation, Titration and Maintenance

The objective of dose titration is to identify an optimal maintenance dose for ongoing treatment of breakthrough pain episodes. This optimal dose should provide adequate analgesia with an acceptable level of adverse reactions. Rescue medication can be used if adequate analgesia is not achieved after use of ABSTRAL during the titration period.

The optimal dose of ABSTRAL will be determined by upward titration, on an individual patient basis. The initial dose of ABSTRAL used should be 100 µg, titrating upwards as necessary through the available range of tablet strengths; 100 µg, 200 µg, 300 µg, 400 µg, 600 µg and 800 µg.

Patients should be carefully monitored until an optimal dose is reached.

ABSTRAL is not a generic of any other fentanyl product. Due to differences in the pharmacokinetic properties of different fentanyl products and the individual variability of patients, patients switching from other fentanyl containing products to ABSTRAL must also start with the 100 µg dose. ABSTRAL is not equivalent on a µg per µg (1:1) basis with all other fentanyl products; therefore, do not switch patients on a µg per µg basis from any other fentanyl product. (See **Titration in patients switching between immediate-release fentanyl containing products**).

The following steps are recommended for initiation and titration; although in all cases the physician should take into account the clinical need of the patient, age and concomitant illness.

**Dose Initiation and Titration:**

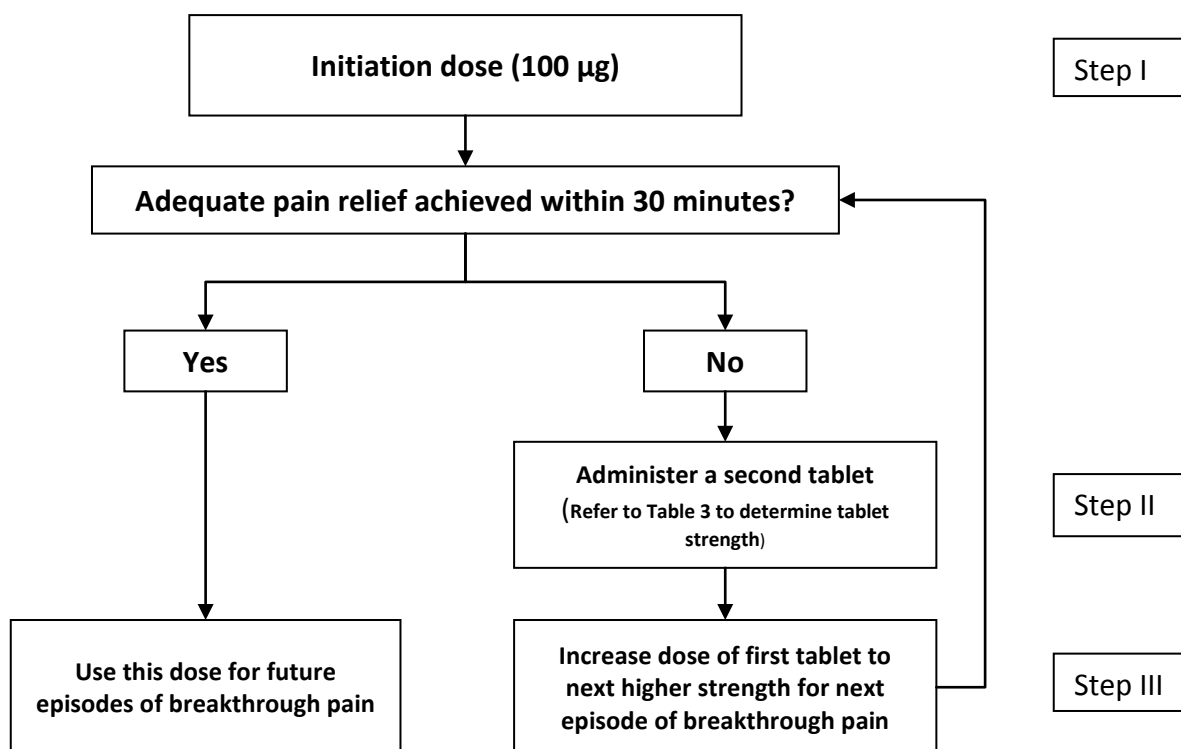
All patients must initiate therapy with a single 100 µg sublingual tablet.

Step I - If adequate analgesia is not obtained within 30 minutes of administration of a single sublingual tablet, a supplemental (second) 100 µg sublingual tablet may be administered. No more than two (2) doses should be administered for a single episode of breakthrough pain during this titration phase. If adequate pain relief is not achieved, please follow Step II & Step III (Refer to Diagram 1 & Table 3 below).

Step II- If adequate analgesia is not obtained within 30 minutes of taking the first dose, an increase in dose to the next highest tablet strength should be considered for the next episode of breakthrough pain (Refer to Diagram 1 & Table 3 below).

Step III- Dose escalation should continue in a stepwise manner until adequate analgesia with tolerable adverse reactions is achieved. For starting doses of 400 micrograms and higher the supplemental (second) sublingual tablet should be 200 micrograms. (Refer to Diagram 1 & Table 3 below).

**Diagram 1: ABSTRAL Titration Process<sup>#</sup>**



<sup>#</sup> Allow for at least two hours between treating breakthrough episodes with ABSTRAL

**Table 3: ABSTRAL tablet strength(s) per episode of breakthrough pain \***

<b>Strength (µg) of first tablet</b>	<b>Strength (µg) of supplemental (second) tablet to be taken 30 minutes after first dose, if required</b>
100 µg	100 µg
200 µg	100 µg
300 µg	100 µg
400 µg	200 µg
600 µg	200 µg
800 µg	-

\* Rescue medication can be used if adequate analgesia is not achieved after use of ABSTRAL during the titration period

If adequate analgesia is achieved at the higher dose, but undesirable effects are considered unacceptable, an intermediate dose (using the 100 µg sublingual tablet where appropriate) may be administered for the next episode of breakthrough pain.

The efficacy and safety of doses higher than 800 µg have not been evaluated in clinical studies in patients. It is therefore not recommended to administer doses higher than 800 µg. During titration, patients can be instructed to use multiples of 100 µg tablets and/or 200 µg tablets for any single dose. No more than four (4) tablets should be used at any one time. In order to minimise the risk of opioid-related adverse reactions and to identify the appropriate dose, it is imperative that patients be monitored closely by healthcare professionals during the titration process.

During titration patients should wait at least two (2) hours before treating another episode of breakthrough pain with ABSTRAL.

### **Titration in patients switching between immediate-release fentanyl containing products**

Fatal respiratory depression has occurred in patients treated with immediate-release transmucosal fentanyl, including following use in opioid non-tolerant patients and improper dosing.

The substitution of any one fentanyl product for any other fentanyl product may result in fatal overdose unless the product is re-titrated from the initial starting dose. When prescribing, do not convert patients on a microgram per microgram (1:1) basis from any other fentanyl products to ABSTRAL.

Substantial differences may exist in the pharmacokinetic profile of immediate-release fentanyl products, which result in clinically important differences in the rate and extent of absorption of fentanyl. Therefore, when switching between fentanyl-containing products indicated for treatment of breakthrough pain, including intranasal formulations, it is essential that patients are again titrated with the new product, and not switched on a dose-for-dose (microgram-for-microgram) basis.

### **Maintenance therapy**

Once an optimal dose has been established, which may be more than one tablet, patients should be maintained on this dose.

Patients should not take more than four (4) ABSTRAL doses per day.

During the maintenance period patients should wait at least two (2) hours before treating another episode of breakthrough pain with ABSTRAL.

### **Dose re-adjustment**

If the response (analgesia or adverse reactions) to the titrated ABSTRAL dose markedly changes, an adjustment of dose may be necessary to ensure that an optimal dose is maintained.

If more than four (4) episodes of breakthrough pain are experienced per day over a period of more than four (4) consecutive days, re-evaluate the dose of the long-acting opioid used for background, cancer-related pain.

If the long acting opioid or dose of long-acting opioid is changed, re-evaluate and re-titrate the ABSTRAL dose as necessary to ensure the patient is on an optimal dose.

It is imperative that any dose re-titration of any analgesic is monitored by a healthcare professional.

### **Discontinuation of therapy**

ABSTRAL should be discontinued immediately if the patient no longer experiences breakthrough pain episodes. The treatment for the persistent background pain should be kept as prescribed.

If discontinuation of all opioid therapy is required, the patient must be closely followed by the doctor in order to avoid the possibility of abrupt withdrawal effects.

### **Use in children and adolescents**

ABSTRAL must not be used in patients less than 18 years of age due to a lack of data on safety and efficacy.

### **Use in elderly patients**

Dose titration needs to be approached with particular care and patients observed carefully for signs of fentanyl toxicity (see also PRECAUTIONS).

### **Use in patients with renal and hepatic impairment**

Patients with kidney or liver dysfunction should be carefully observed for signs of fentanyl toxicity during the ABSTRAL titration phase (see also PRECAUTIONS).

### **Special precautions for disposal**

Waste material should be disposed of safely. Patients/carers should be encouraged to return any unused product to the Pharmacy, where it should be disposed of in accordance with national and local requirements.

## **OVERDOSAGE**

The symptoms of fentanyl overdose are an extension of its pharmacological actions, the most serious effect being respiratory depression, which may lead to respiratory arrest.

Management of opioid overdose in the immediate term includes removal of any remaining ABSTRAL sublingual tablets from the mouth, physical and verbal stimulation of the patient and an assessment of the level of consciousness. A patent airway should be established and maintained. If necessary an oropharyngeal airway or endotracheal tube should be inserted, oxygen administered and mechanical ventilation initiated, as appropriate. Adequate body temperature and parenteral fluid intake should be maintained.

For the treatment of accidental overdose in opioid-naïve individuals, naloxone or other opioid antagonists should be used as clinically indicated and in accordance with their Product Information. Repeated administration of the opioid antagonist may be necessary if the duration of respiratory depression is prolonged.

Care should be taken when using naloxone or other opioid antagonists to treat overdose in opioid-maintained patients, due to the risk of precipitating an acute withdrawal syndrome.

If severe or persistent hypotension occurs, hypovolaemia should be considered, and the condition should be managed with appropriate parenteral fluid therapy.

Muscle rigidity interfering with respiration has been reported with fentanyl and other opioids. In this situation, endotracheal intubation, assisted ventilation and administration of opioid antagonists as well as muscle relaxants may be requested.

#### **PRESENTATION AND STORAGE CONDITIONS**

ABSTRAL fentanyl (as citrate) 100 µg sublingual tablets (round-shaped, white, flat-faced, bevel-edged tablet)

ABSTRAL fentanyl (as citrate) 200 µg sublingual tablets (oval-shaped, white, flat-faced, bevel-edged tablet)

ABSTRAL fentanyl (as citrate) 300 µg sublingual tablets (triangle-shaped, white, flat-faced, bevel-edged tablet)

ABSTRAL fentanyl (as citrate) 400 µg sublingual tablets (diamond-shaped, white, flat-faced, bevel-edged tablet)

ABSTRAL fentanyl (as citrate) 600 µg sublingual tablets ("D"-shaped, white, flat-faced, bevel-edged tablet)

ABSTRAL fentanyl (as citrate) 800 µg sublingual tablets (caplet -shaped, white, flat-faced, bevel-edged tablet)

ABSTRAL is supplied in child-resistant foil blister packs of 10 sublingual tablets.

Each blister pack is packaged in cartons of 10 or 30 sublingual tablets.

The packaging is colour-coded for each ABSTRAL sublingual tablet strength.

Not all pack sizes may be marketed.

Store below 25°C.

Store in the original blister package in order to protect from moisture.

#### **NAME AND ADDRESS OF THE SPONSOR**

A. Menarini Australia Pty Ltd

Level 8, 67 Albert Avenue

Chatswood, NSW 2067

Australia

#### **POISON SCHEDULE OF THE MEDICINE**

S8

#### **DATE OF FIRST INCLUSION IN THE AUSTRALIAN REGISTER OF THERAPEUTIC GOODS (ARTG)**

17 June 2014

#### **DATE OF MOST RECENT AMENDMENT**

30 November 2015